



## PORTA-RAY 400R

### Portable UV Curing System

UV1197 / UV1198

***New***

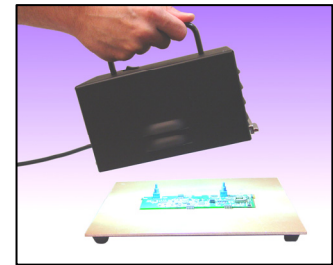


The *PORTA-RAY 400R* is a portable or low production UV curing system. Because of its versatility, it can handle a variety of UV curing applications. With an effective curing area of 5 x 3", it is ideal for curing small parts. The unit features a removable head, which serves as a handheld curing lamp during operation. Due to its simple yet high-tech design, the *PORTA-RAY* is extremely user-friendly and reliable, requiring virtually no learning curve or setup time. Weighing-in at a modest 6 pounds, the system is ideal for curing applications where frequent transportation is involved.

#### FEATURES

- **Removable lamp head**

The hand-held 3 ½ pound lamp head contains a long life 400-Watt metal halide type lamp, which emits evenly distributed, 500mW/cm<sup>2</sup> UVA light (320–390nm). Typical lamp life is 1000 hours.



- **Lamp power regulation**

The system's switch mode power supply maintains constant lamp power regardless of variations in AC line input or lamp voltages. This regulation provides for repeatable curing times and longer lamp life.

- **Standby mode**

The unit features a standby mode rocker switch, which reduces lamp power by one half. This mode can be used to reduce heat and stray UV light output while the system is not in use.

- **Two AC line input versions**

The system is available in voltage ranges that make it compatible for use worldwide. The UV1197 covers the range of 90-132VAC, and the UV1198 covers 180-265 VAC line input.



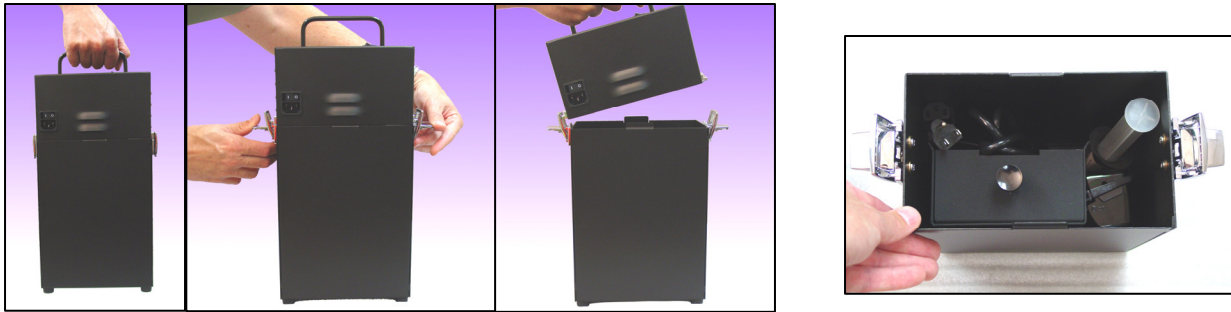
Uvitron International, Inc. • 380 Union Street • West Springfield, MA 01089 USA • (413) 731-7835

Web Site: <http://www.uvitron.com/> • Email: [info@uvitron.com](mailto:info@uvitron.com)

All specifications contained herein are preliminary and subject to change without notice

- **Forced air cooling**

An integrated cooling fan in the lamp head insures cool operation and high system reliability.

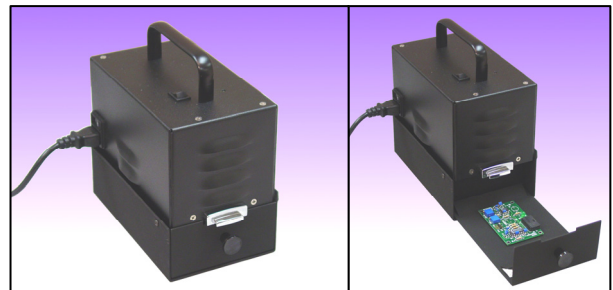


- **Latching Carrying Configuration**

The PortaRay utilizes a two-piece design: the top portion contains the UV lamp and solid-state controls, and the bottom enclosure is a storage compartment for accessories such as headrest, power cord UV glasses, adhesive, etc.

- **Headrest with Drawer**

The system includes an enclosed headrest for holding the lamp head, providing light shielding during idle periods. The headrest also doubles as a mini chamber for curing of small parts.



**Specifications:**

Category	Parameter	Value	Conditions/Notes
<b>General</b>	Model	PORTA-RAY 400R	
	Part Number	UV1197 (120VAC)	UV1198 (240VAC)
<b>Power Supply</b>	Input Voltage	100-120VAC +/-10%	200-240VAC +/-10%
	Input Current (max)	7 Amperes	3.5 Amperes
	Source Input Frequency	47 Hz to 63 Hz	47 Hz to 63 Hz
	Lamp Power Regulation	± 1%	
<b>Lamp</b>	Lamp Type	400 Watt Metal Halide	Quartz, ozone-free
	Lamp Peak Irradiance	500mW/cm2 UVA	2" from base of lamp head
	Curing Area	5 x 3" minimum	Affected by lamp height
	Lamp Life	1000 hours typical	Affected by # of on/off cycles
<b>Dimensions</b>	L x W x H (inches)	8" x 5" x 16.5"	Including bottom enclosure
	Weight (lbs.)	6 lbs. w bottom box	3.5 lbs. lamp head only
	Max Chamber Part Size	4.25" x 4.25" x 2"	For curing in headrest

Uvitron International, Inc. • 380 Union Street • West Springfield, MA 01089 USA • (413) 731-7835

Web Site: <http://www.uvitron.com/> • Email: [info@uvitron.com](mailto:info@uvitron.com)

All specifications contained herein are preliminary and subject to change without notice