

# LEDZERO SOLIDCURE 2

# INTEGRATION TECHNOLOGY

**Slim, Compact, High Output, Water cooled, UV LED Solutions**

**LEDZero Solidcure 2 with its class leading dose and unmatched linearity of output can surpass any other water cooled unit of this type.**

Slim and ultra compact architecture enables easy integration while the water cooled feature will provide precision high output. Benefitting from the latest in semi-conductor developments Solidcure 2 also offers a highly efficient UV LED solution further reducing energy and cooling input.

LEDZero Solidcure 2 is fully scalable length, so can be tailored to meet even the widest of UV LED requirements in a variety of different applications.

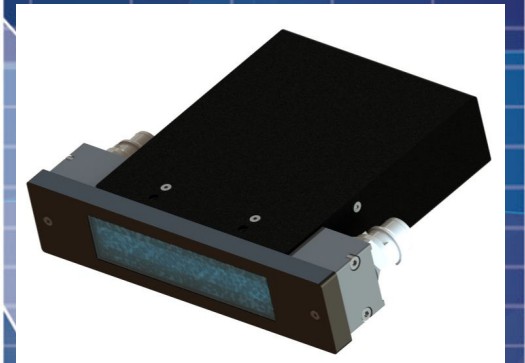
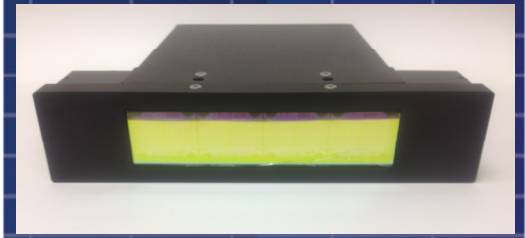
**Typical applications for the LEDZero Solidcure 2 include:**

- High speed inkjet printing
- High speed roll to roll flexographic and offset printing
- Converting
- Curing of paints, lacquer and heavy coating films

LEDZero Solidcure 2 can be adapted for many more applications, if your application is not listed then please do not hesitate to contact us for further information.

**LEDZero Solidcure 2 Standard Specifications**

- Up to 16W/cm<sup>2</sup>
- Available in 4 alternative wavelengths
- Solid output (non-pulse width modulated)
- Class leading dose
- Fully scalable in length
- Field replaceable modules offering extended service life
- Driver electronics fully integrated within the lamp head
- Switch mode power supply unit which ensures world-wide compatibility
- Variable Power
- Addressable as standard, offering width switching or zone selection
- 3 Alternative models to cover the widest range of applications



LEDZero Solidcure 2



## LEDZero Solidcure 2

### Lamp Head Specifications

Power or Intensity up to 16W/cm<sup>2</sup> (model dependant)

Alternative wavelengths (all models); 405nm; 395nm; 385nm & 365nm

Standard models from 60mm – 540mm in 30mm increments, longer lengths available upon request.

Dimensions; W 44m x H 162mm x L (Solidcure 2 & Solidcure 2 N)  
W 75m x H 157mm x L (Solidcure 2 HD)

Emitting window width: 25 mm (Solidcure 2 & Solidcure 2 N)  
46 mm (Solidcure 2 HD)

Fully functional modular driver cards in the head (head only option available)

Width or zone switching in 30mm increments / modules

### Power Supply Specifications

Variable Power 0 – 10 Vdc

48Vdc, compliant with low voltage directory

Switch-mode Power Supply 50/60 Hz, 200-250vac. (90-110vac available upon request)

Fully CE and RoHS compliant

## LEDZero Solidcure 2 N

LEDZero Solidcure 2 N model, offers the same features and benefits, with a lower output of up to 8W/cm<sup>2</sup>, providing a cost effective solution for less demanding applications.

## LEDZero Solidcure 2 HD

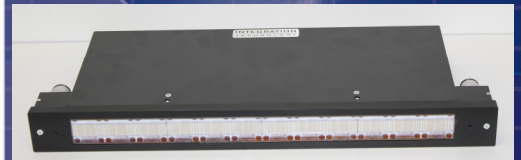
LEDZero Solidcure 2 HD, offers the same features and benefits, with twice the dose of the standard unit to meet even the most demanding requirements.

Due to the class leading output, LEDZero Solidcure 2 HD brings to the market a UV LED solution for applications, until now not possible.

Authorized distributor in China: Shenzhen Wisbay M&E Co., Ltd  
Shenzhen: 0755-86215125 Shanghai: 021-61005201  
Email: info@wisbay.cn Website: www.wisbay.cn



LEDZero Solidcure 2 N



LEDZero Solidcure 2 HD



## INTEGRATION TECHNOLOGY LTD.

133 Heyford Park, Upper Heyford, Oxon, OX25 5HA, UK

Europe; T: +44 (0) 1869 233 611

China; T: +86 21 6466 5490

North America; T: +1 312 202 0394

Korea; T: + 82 2846 3611

Japan; T: +81 42 310 9717

[mail@uvintegration.com](mailto:mail@uvintegration.com)

[www.uvintegration.com](http://www.uvintegration.com)

Strategic Partner of IST Metz GmbH