

**FastTest**<sup>®</sup>

*Your Productivity Connection*

# Leak Test Connector Selection Guide



**FastTest**  
*Your Productivity Connection*

## Introduction to FasTest

### Leak Testing Today ...

Since 1985, **FasTest** advanced engineering creates connecting solutions that are easier, safer and more reliable while dramatically lowering your operating costs. With **FasTest**, you can expect increased operational throughput and a fast return on your investment.

Tens of thousands of satisfied customers have made the switch from their inadequate, unproductive leak test connectors to our engineered testing and filling solutions.

**FasTest** products are used by every major automotive manufacturer, top appliance companies, medical device manufacturers, aerospace, power generation, plus hundreds of other industries throughout the world.

Our complete selection of engineers products combined with extensive experience and expertise allows us to help you specify the right connector for your application. Small differences can diminish the suitability of a connector for your application. At **FasTest** we can modify standard products to fit your specific needs or engineer a total custom test system.

### Helpful Hint ...

Cumbersome leak testing methods using jury-rigged adapters, fittings and test jigs is time-consuming, unreliable and may be unsafe to your workers.

**FasTest** connecting tools are available in many configurations - each precision engineered to perform specific pressure and vacuum test and built to fit your testing and process requirements.

**FasTest** offers extensive expertise to help you arrive at the optimum solution for your application and workflow. With over 50 patents and as the acknowledged expert in the field, chances are we've solved an application like yours, no matter how challenging.

Do as thousands of others have done. Make the switch from older inadequate or homemade jury-rigged adapters to **FasTest** engineered testing and filling solutions.

### Seal Materials ...

Selecting the right seal material is critical to the reliability of the connector and the amount of maintenance required. **FasTest** manufactured seals exhibit superior wear resistance and maintain its sealing properties.

**FasTest** offers neoprene, urethane, Viton, EPDM, Buna-N, and FDA white neoprene. Our seals are manufactured via **FasTest** proprietary process which is why our seals are more durable, longer lasting and create a better leak tight connection.



**“FI” & “FE” Series  
Automated Tube / Thread**



Tech Info Page A4

**FasTest Internal “FI”  
Automated Tube / Thread**



Internal “FI” Pages A11 - A15

**FasTest External “FE”  
Automated Tube / Thread**



External “FE” Pages A16 - A22

**“ME” & “ML” Medical Series  
Automated Tube / Luer**



Pages B1 - B4

**Electronic Tool System - ETS  
Automated Tube / Thread**



Pages C1 - C14

**“MIT” & “MET” TwistMate Series  
Twist to Connect - Threads**



Pages D1 - D16

**“FN” FasMate Series  
for Internal Threads**



Pages E1 - E11

**“JNL” & “JXL” Series, Grip and Seal  
Smooth Tube Connectors**



Pages F1 - F6

**“ST” & “XT” Series, Grip and Seal  
Smooth and Formed Tubes**



Pages G1 - G3

**“60” Series & “HPB” Series  
Sleeve Actuated for Threads**



Pages H1 - H3

**Custom Connector Applications  
Fittings, Tubes and More**



“MBE” Series

“70” Series

“FIG” Series

Pages J1 - J6

**Web Tools Search Tips:**  
Connectors, Replacement  
Seals and Instructions, etc.

Pages B4, D16, F6, G3, K7-K8

Custom App Form Page J6  
Index Page K1  
ReConnect Page K9  
Warranty Page K9

\*See section pages for  
detailed selection guides

FI - FE

ME - ML

ETS

TwistMate

FasMate

JNL - JXL

ST - XT

60 - HPB

Custom

Index

## “60 and HPB Series” - Sleeve Actuated Connectors

### Technology Overviews

The **60 Series** connectors have a sliding sleeve and threaded collet design for instantly sealed connections to 750 psi. The design incorporates an internal piston that seals the mating part and enhances the seal as pressure increases. Connections are made with a simple push and snap motion.

The internal sealing piston provides a straight through flow for minimal restriction and pressure loss. Standard products are manufactured in stainless steel with Buna N seals. Other seal materials and custom designs are available for all your applications.

The **HPB Series** connectors have a sliding sleeve and threaded collet design for instantly sealed connections to 5000 psi. The design is the ideal and preferred method for fast, safe and repeatable connections to NPT, “AN” SAE 37° flare and SAE 45° flare profile male threads. Additional models are available for compression fittings custom thread applications.

Simply push the connector on to the male threads to connect and pull sleeve away from connection to release. Standard products are manufactured in stainless steel with Buna N seals. Other seal materials and custom designs are available for all your applications.

### Features and Benefits

#### “60 Series”

- Compatible to NPT, SAE 37° “AN” flare and SAE 45° flare male threads
- Instant connections from vacuum to 750 psi eliminate tape, sealant, wrenches and thread damage
- High flow design for short filling and testing times
- Rugged stainless steel housing
- -40°F to +250°F operating temperature



For External Threads

#### “HPB Series”

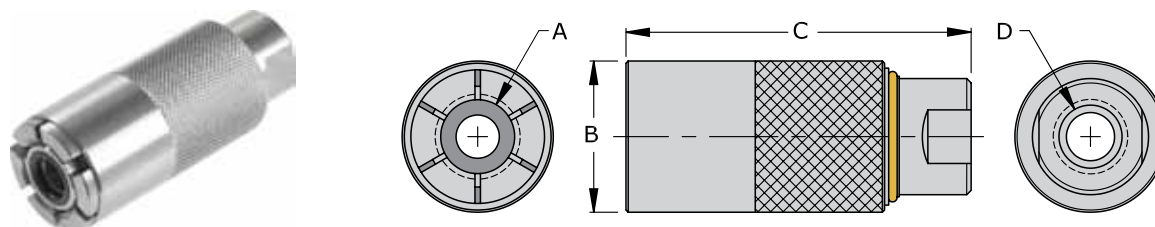
- Compatible to NPT, “AN” SAE 37° flare and SAE 45° flare male threads
- Instant connections from vacuum to 5000 psi eliminate tape, sealant, wrenches and thread damage
- Safety feature will not allow disconnect under pressure
- Split collet design locks securely
- Easy to replace main seal



For External Threads

# “60 and HPB Series” - Sleeve Actuated Connectors

## FasTest “60 Series” - Connectors for External Threads



### “60 Series” Sleeve Actuated for NPT Threads (per SAE J476)

Part Number	Dim A	Dim B	Dim C	Dim D	Rated PSI	Housing Material	Seal Material	Main Seals Package (5)
60G-1T02	1/8" NPT	0.99"	2.95"	1/8" NPT	Vacuum to 750	Stainless Steel	Buna N	S1105-B70
60G-1T04	1/4" NPT	1.19"		1/4" NPT				S1109-B70
60G-1T06	3/8" NPT	1.38"	3.15"	3/8" NPT				S1111-B70
60G-1T08	1/2" NPT			1/2" NPT				S1112-B70
60G-1T12	3/4" NPT	1.58"	1/2" NPT	Consult Factory				
60G-1T16	1" NPT	1.97"	3/4" NPT	Consult Factory				

### “60 Series” Sleeve Actuated for “AN” SAE 37° Flare Threads (per SAE J514)

Part Number	Dim A	Dim B	Dim C	Dim D	Rated PSI	Housing Material	Seal Material	Main Seals Package (5)
60G-049	-4 (7/16-20)	0.99"	2.95"	1/8" NPT	Vacuum to 750	Stainless Steel	Buna N	S1010-B70
60G-069	-6 (9/16-18)	1.19"		1/4" NPT				S1012-B70
60G-089	-8 (3/4-16)	1.58"	3.15"	1/2" NPT				S1014-B70
60G-109	-10 (7/8-14)	1.78"	3.54"	3/4" NPT				S1016-B70
60G-129	-12 (1 1/16-12)			Consult Factory				
60G-169	-16 (1 5/15-12)	1.97"	3.54"	3/4" NPT				S1120-B70

### “60 Series” Sleeve Actuated for SAE 45° Flare Threads (per SAE J512/513)

Part Number	Dim A	Dim B	Dim C	Dim D	Rated PSI	Housing Material	Seal Material	Main Seals Package (5)
60G-A04	-4 (7/16-20)	0.99"	2.95"	1/8" NPT	Vacuum to 750	Stainless Steel	Buna N	S2060-0246B70
60G-A06	-6 (5/8-18)	1.38"	3.15"	3/8" NPT				S1012-B70
60G-A08	-8 (3/4-16)							S1015-B70
60G-A10	-10 (7/8-14)	1.78"	3.54"	3/4" NPT				S1015-B70
60G-A12	-12 (1 1/16-14)							S1117-B70
60G-A14	-14 (1 1/4-12)	1.97"	3.54"	3/4" NPT				Consult Factory
60G-A16	-16 (1 3/8-12)							Consult Factory

**Notes:**

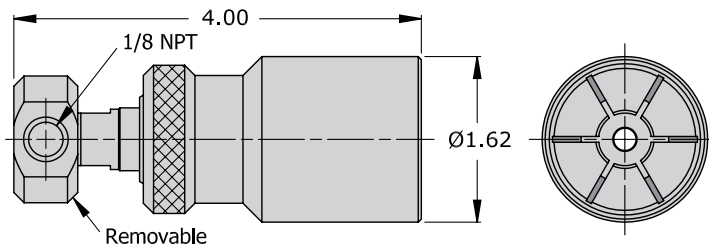
Additional sizes available for 60 Series connectors. Consult factory for details.

Optional seal materials available are FKM (Viton) and EPDM.

Examples: 60G-xxxV = FKM (Viton)    60G-xxxE = EPDM

## “60 and HPB Series” - Sleeve Actuated Connectors

### FasTest “HPB Series” - Connectors for External Threads / Compression Fittings



#### “HPB Series” Sleeve Actuated for NPT Threads (per SAE J476)

Part Number	Connects to	Termination Port	Rated PSI	Housing Material	Seal Material	Repair Kit	Main Seals Package (5)
HPB-041021	1/4" NPT	1/8" NPT	Vacuum to 5000	Stainless Steel	Buna N	HPBR	S1008-B70
HPB-061021	3/8" NPT						S1011-B70
HPB-081021	1/2" NPT						S1013-B70

#### “HPB Series” Sleeve Actuated for “AN” SAE 37° Flare Threads (per SAE J514)

Part Number	Connects to	Termination Port	Rated PSI	Housing Material	Seal Material	Repair Kit	Main Seals Package (5)
HPB-049021	- 4 (7/16-20)	1/8" NPT	Vacuum to 5000	Stainless Steel	Buna N	HPBR	S2070-0270B70
HPB-069021	- 6 (9/16-18)						S1012-B70
HPB-089021	- 8 (3/4-16)						S1015-B70

#### For Compression Fittings - Swagelok® or Equivalent

Part Number	Connects to	Termination Port	Rated PSI	Housing Material	Seal Material	Repair Kit	Main Seals Package (5)
HPB-CF04021	1/4" (7/16-20)	1/8" NPT	Vacuum to 5000	Stainless Steel	Buna N	HPBR	S1008-B70
HPB-CF06021	3/8" (9/16-20)						S1011-B70
HPB-CF08021	1/2" (3/4-20)						S1013-B70

#### For Compression Fittings - Ferulok® or Equivalent

Part Number	Connects to	Termination Port	Rated PSI	Housing Material	Seal Material	Repair Kit	Main Seals Package (5)
HPB-CF04021F	1/4" (7/16-20)	1/8" NPT	Vacuum to 5000	Stainless Steel	Buna N	HPBR	S1008-B70
HPB-CF06021F	3/8" (9/16-18)						S1011-B70
HPB-CF08021F	1/2" (3/4-16)						S1013-B70

**Notes:**

Optional seal materials available are FKM (Viton) and EPDM.

Examples: HPB-xxx021**V** = FKM (Viton)      HPB-xxx021**E** = EPDM

## Connector Refurbishment Program

### ReConnect



**Extend the service life and warranty of your investment** - Our connector refurbishment and competitor replacement program delivers the latest product improvements and ensures proper connector operation and performance in your application. Connectors routinely maintained can be refurbished or replaced economically relative to the cost of a new connector replacement.

Visit [www.fastestinc.com](http://www.fastestinc.com) or contact **FasTest** for details.

## Warranty

### Limited Express Warranty

FasTest Inc. warrants its products against defects in workmanship and materials for 12 months from the date of sale by FasTest Inc. or its authorized distributors. This warranty is void if the product is misused, tampered with or used in a manner that is contrary to FasTest Inc.'s written recommendations and/or instructions.

FasTest Inc. does not warrant the suitability of the product for any particular application. Determining product application suitability is solely the customer's responsibility. FasTest Inc. is not liable for consequential or other damages including, but not limited to, loss, damage, personal injury, or any other expense directly or indirectly arising from the use of or inability to use its products either separately or in combination with other products.

ALL OTHER WARRANTIES EXPRESS OR IMPLIED, WHETHER ORAL, WRITTEN OR IN ANY OTHER FORM, INCLUDING BUT NOT LIMITED TO WARRANTIES OF MERCHANTABILITY OR FITNESS FOR A PARTICULAR PURPOSE ARE EXPRESSLY EXCLUDED.

The sole and exclusive remedy under this warranty is limited to replacement of the product or an account credit in the amount of the original selling price, at the option of FasTest Inc. All allegedly defective products must be returned prepaid transportation to FasTest Inc., together with information describing the product's performance, unless disposition in the field is authorized in writing by FasTest Inc.

## Notifications and Copyright

### Notifications and Copyright

Specifications in this brochure are subject to change without notice. FasTest also reserves the right to make modifications and makes no guarantee of the accuracy of the information contained herein.

© 2012 FasTest Inc. All rights reserved. No part of this publication may be reproduced without written permission.



### Calibration Connectors

The **FasCal** complete line of plug and play connectors for lab and field instrument calibration without the use of tapes, sealants and wrenches.



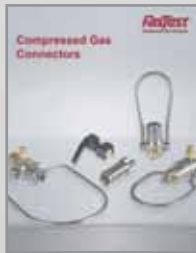
### Medical Connectors

Versatile product line of connectors and systems for sealing and testing a wide variety of medical products and drug delivery devices.



### Refrigeration Connections

The **CoreMax** system of high flow processing valves and connectors for the refrigeration manufacturing and service industry.



### Compressed Gas Connectors

Innovative gas connectors for common CGA standards used in conventional and residual pressure valve filling applications.

# **FasTest**<sup>®</sup>

1646 Terrace Drive • Roseville, MN 55113-1317  
Phone: 651.645.6266 • Fax: 651.645.7390  
Toll-free: 1.800.444.2373  
[www.fastestinc.com](http://www.fastestinc.com)

MKMF100 4/12

美国FasTest中国区代理商：

深圳市慧烁机电有限公司  
深圳市南山大道2019号  
福临苑大厦16E (518052)  
电话：0755-8621 5125 / 5145  
传真：0755-8621 5195  
邮箱：[info@wisbay.cn](mailto:info@wisbay.cn)  
网站：[www.wisbay.cn](http://www.wisbay.cn)

上海办事处  
上海市浦东新区新金桥路1088号  
联创国际大厦1514室(201206)  
电话：021-6100 5201 / 5202  
传真：021-6100 5195

© 2012 FasTest Inc. All rights reserved.