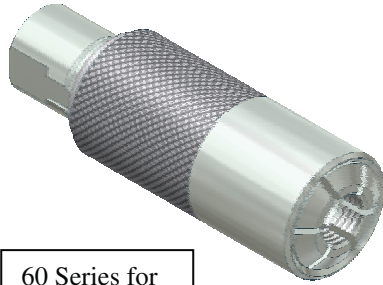


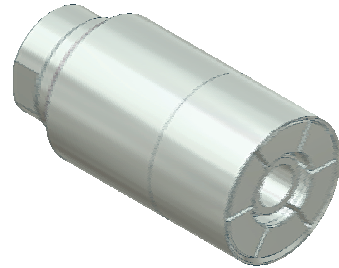
OPERATING INSTRUCTIONS

WEH 60 & 70 Series Connectors

DESCRIPTION: Sleeve Activated Connectors for Sealing Male Threads and Formed Tube Ends.



60 Series for
Male Threads



70 Series for Tube
Configurations

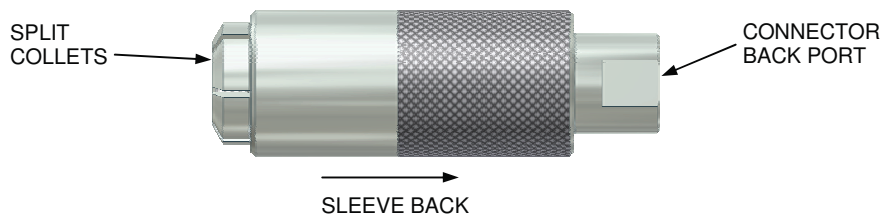
Please thoroughly read the instructions prior to operating the connector. This connector is designed to provide a safe, reliable leak-tight seal and connection when properly maintained and operated.

- The connector is designed to mate with a specific application. Verify the application prior to the introduction of pressure or processing. Use only in a safe environment. Safety chains and guards are recommended for all applications.
- Connectors are NOT designed for permanent connections and are for temporary connections only.

DO NOT EXCEED pressure rating as marked on connector or corresponding literature. Before using, verify that this pressure rating is within your working pressures.

OPERATION:

1. To connect to a tube or male threads expand the split collets by sliding the knurled sleeve away from test piece.



2. Insert male end of the component to be tested into collets and press against connector. Spring action forces knurled sleeve forward, collapsing collets for grip and seal action.

NOTE: DO NOT FORCE CONNECTOR ONTO TEST PART WHEN CONNECTING. THE SPLIT COLLET SHOULD EASILY MATE WITH TEST PIECE. FORCING THE CONNECTOR WILL RESULT IN POOR SEALING AND POSSIBLE LEAKAGE. DO NOT TURN OR ROTATE CONNECTOR AFTER THE COLLETS HAVE GRIPPED TEST PART. DAMAGE TO TEST PIECE AND THE CONNECTOR'S INTERNAL PARTS MAY RESULT.



3. Tug on the connector to assure proper engagement and gripping before introduction of pressurized media.
4. Activate test media through connector back port. Pressure will enhance the seat.
5. To disconnect from test piece, deactivate test pressure. Slide knurled sleeve away from test piece to expand collets. Remove connector from test piece.

CAUTION: 60 & 70 WEH connectors are not internally valved. Disconnect while pressurized can cause rapid separation and high velocity loss of media.

MAINTENANCE:

- Periodically inspect connector and seal for proper operation. Repair or replace parts as required to assure positive sealing and performance.
- Establish a regular interval for lubrication. The media and environment will be determining factors in establishing this interval to prevent dryness and/or corrosion.
- Difficulty of operation after continual use indicates need for lubrication or other maintenance. Repair parts, instructions and tools are available. Please contact your *FasTest* Distributor or the factory for assistance.

FasTest, Inc. Product Warranty

FasTest, Inc. warrants its products against defects of workmanship and/or material for 12 months from the date of the sale by *FasTest, Inc.* This warranty is void if the product is misused, tampered with or used in a manner that is not in accordance with *FasTest, Inc.* recommendations and/or instructions. *FasTest, Inc.* is not liable for consequential or other damages including, but not limited to, loss, damage, personal injury, or any other expense directly or indirectly arising from the use of or inability to use its products either separately or in combination with other products. ALL OTHER WARRANTIES EXPRESSED OR IMPLIED, WHETHER ORAL OR WRITTEN, INCLUDING BUT NOT LIMITED TO WARRANTIES OF MERCHANTABILITY OR FITNESS FOR A PARTICULAR PURPOSE ARE EXPRESSLY EXCLUDED.

Remedy under this warranty is limited to replacement of the product or an account credit in the amount of the original selling price, at the option on *FasTest, Inc.* All allegedly defective products must be returned prepaid transportation to *FasTest, Inc.* along with information describing the products performance, unless disposition in the field is authorized in writing by *FasTest, Inc.*